

cubes

MILAN FAIR 2013

*Products, events and interviews
from this year's Salone*

PARKROYAL ON PICKERING

*WOHA's striking new addition to
the Central Business District*

IP:LI ARCHITECTS

*An architect and his firm's quest
for something more*

Wall House

A HUSHED AND UNDERSTATED ABODE FROM
A THREE-WAY COLLABORATION AMONG FARM,
STUDIO TERRE AND LOCUS ASSOCIATES



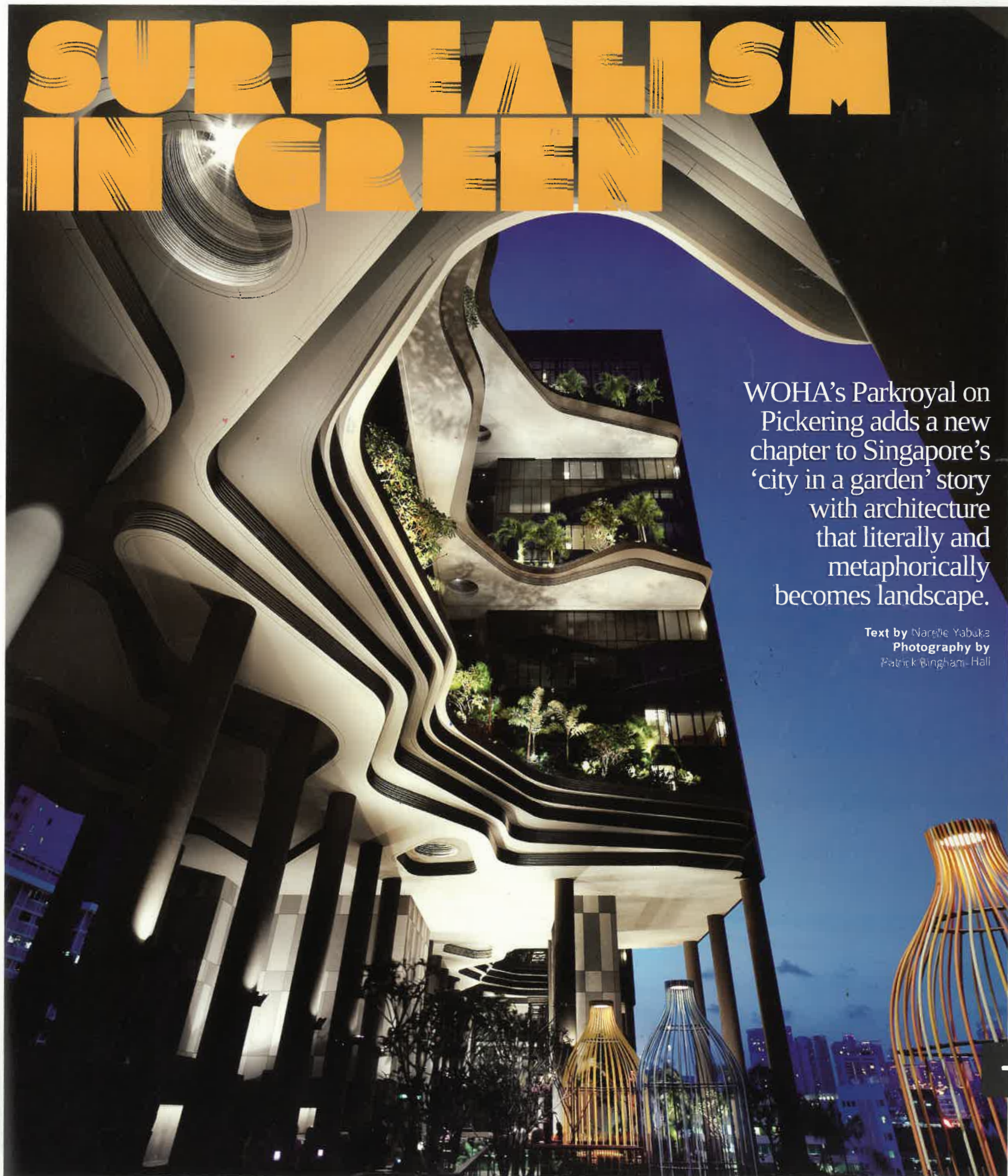
8 886385 903073

JUNE/JULY 2013 | \$8.00

SURREALISM IN GREEN

WOHA's Parkroyal on Pickering adds a new chapter to Singapore's 'city in a garden' story with architecture that literally and metaphorically becomes landscape.

Text by Narelle Yabuka
Photography by
Patrick Bingham-Hall





←
UPTURNED TERRACES:
 A surreal garden now joins Hong Lim Park at the corner of Upper Pickering Street and South Bridge Road

↓
FILM OF GREEN:
 Vines will eventually cascade from the sweeping sky terraces. This view is from the club lounge



WHEN RICHARD HASSELL BEGAN HIS PRESENTATION of some of *WOHA's* vegetation-laden high-rise residential projects at the *World Architecture Festival* (WAF) 2012, he talked about the space under trees – the gently shaded, breezy, moderated environment that naturally brings enhanced comfort and habitability to the harsh tropical outdoors. He asked, can this kind of space be replicated in the city at high densities?

WOHA's co-founding director proceeded to discuss the firm's scheme for the *Duxton Plain HDB* housing competition, *Newton*

Suites, the *Dawson Estate HDB* scheme, and *The Met (Bangkok)*. Streets in the sky, buildings as city columns, public elevated garden spaces, and sky communities emerged as key themes of the work.

He concluded by showing the result of a staggering design exercise – a project that would create a 'second Singapore' on the Southern Islands. This mega-dense 'green' city would accommodate 5 million people in a porous 45-square-kilometre grid of interconnected towers and curving elevated



THESE PLANES...CREATE AN ELEVATED PODIUM WITH LOFTY CAVE-LIKE SPACES BENEATH IT

↑ **CONTOURED CONDITION:**
Screens in the lobby gesture toward intimate zones in a lofty cave-like interior of the long wall

← **CIVIC EDGE:**
Columns demarcate the edge of an 'urban verandah' along Upper Pickering Street

ground planes, channelling breezes and dripping with lush foliage and crops (see Cubes Issue 55 for an image). It's an incredible proposal that teeters between the surreal and the rational, inspiring awe in the manner of science fiction while simultaneously making a sensible case for a super-high density approach to tropical city design that favours sustainability and liveability.

The impression of the real meeting the surreal was without doubt similarly felt by many when the first renderings of WOHA's design for Parkroyal on Pickering were released. The edge of Singapore's CBD, the images suggested, would soon be punctuated by a confluence of crisp glass-clad blocks; sweeping sky terraces overflowing with trees, shrubs, and vines; and enormous stacks of curved planes stepping back beneath each other like upturned contours or paddy fields. Near the base of the building, these planes would create an elevated podium with lofty cave-like spaces beneath it.



METAPHORICAL TREATMENT AND THE ABSTRACTION OF NATURE WAS IMPLEMENTED WITH ELEMENTS SUCH AS MOSS-LIKE CARPET AND REFLECTIVE MIRRORED LAMINATE CEILINGS

The rather confrontational scale of the 'paddy field' podium and the ground-level spaces, the abstract and metaphorical qualities of the design, and the profusion of vegetation in the images suggested a new vision of Singapore (the 'city in a garden'). The more commonly seen high-rise greening strategies of straightforward planter boxes, roof gardens, rectilinear sky terraces carved from towers, and simple green walls were superseded by a sculptural approach that turned architecture – via metaphor as well as real dirt – into a landscape itself. WOHA was challenging us to accept a new fusion of building and garden; continuing the journey that it began with earlier projects such as the Duxton Plain scheme.

Parkroyal on Pickering has been open since January, and has been enjoying high occupancy rates from both business and leisure travellers. The sky gardens and podium contours do not yet embody the full drama indicated by WOHA's renders, as the vines require growing time to achieve the cascading

FRAMED VIEW: ↑
A communal table finished in decorative tiles is one of the multiple settings in the sixteenth-storey club lounge

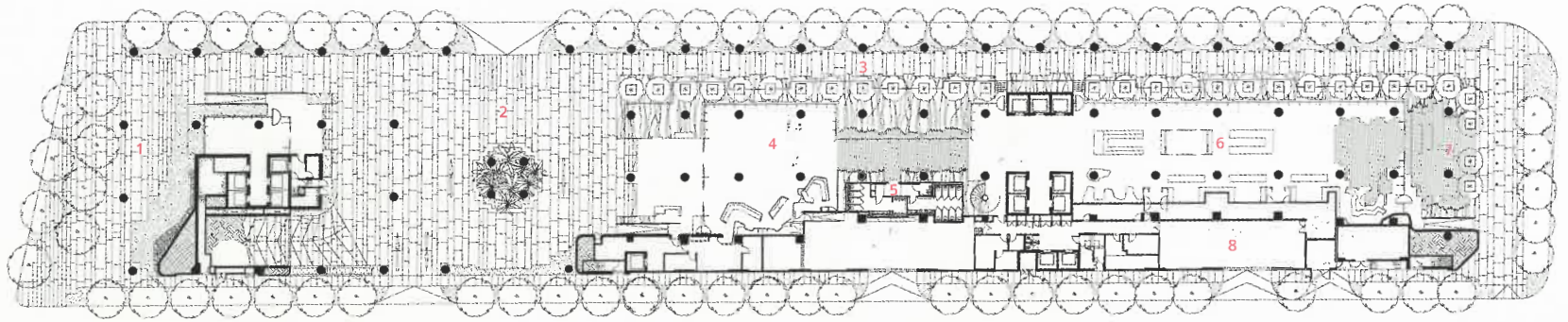
→
SCREEN CAPTURE:
Delicate shadows fall onto spiral stairs that connect the ground level and the second storey



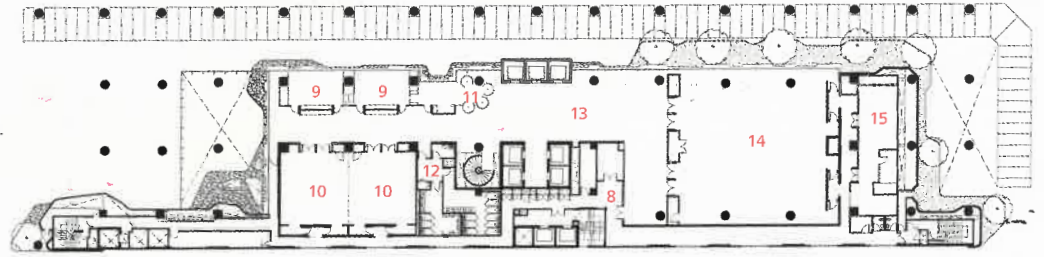
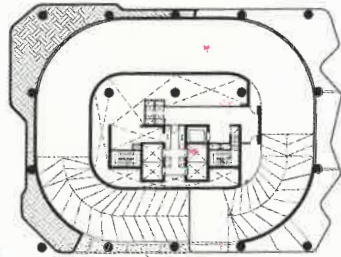
of rippled water beside the all-day dining restaurant



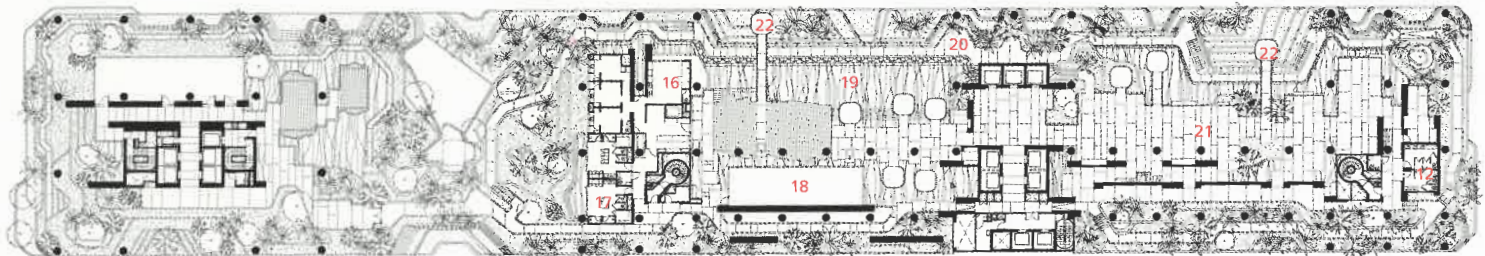
SPACE
Hotel



1st Floor Plan



2nd Floor Plan



5th Floor Plan

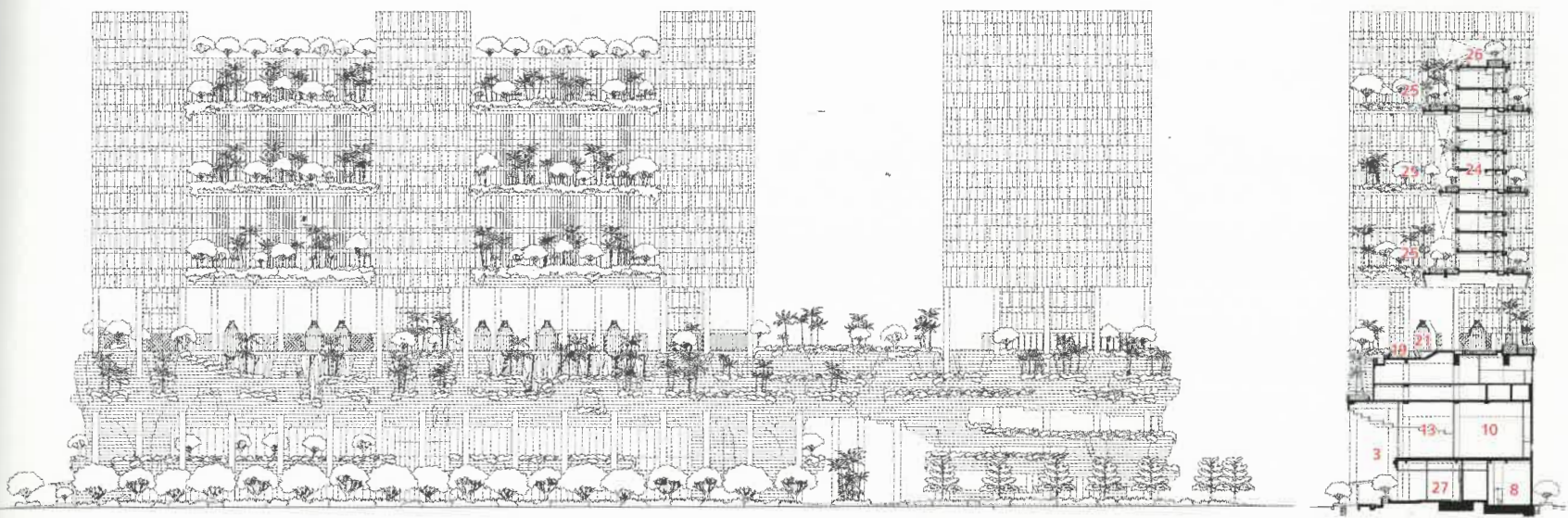
- | | |
|----------------------|---------------------|
| 1 Landscape Plaza | 15 Kitchen |
| 2 Entrance Plaza | 16 SPA |
| 3 Urban Verandah | 17 Changing Rooms |
| 4 Hotel Lobby | 18 GYM |
| 5 Restrooms | 19 Swimming Pool |
| 6 All Day Dining | 20 Garden Walk |
| 7 Outdoor Terrace | 21 Cabanas |
| 8 Back of House | 22 Event Terrace |
| 9 Meeting Rooms | 23 Restrooms |
| 10 Conference Rooms | 24 Guestrooms |
| 11 Business Centre | 25 Hotel Skygarden |
| 12 Restrooms | 26 Roof Terrace |
| 13 Prefunction Lobby | 27 Hotel Passageway |
| 14 Ballroom | |



7th Floor Plan



14th Floor Plan



Upper Pickering Street Elevation

Cross Section

green effect. Nevertheless, the key intentions of the architects can be appreciated.

Serving the hospitality rather than residential context, the design of Parkroyal on Pickering does not chiefly focus on the potential community-building aspects of the landscaped areas. Rather, green spaces here are tasked with establishing close visual connections between the hotel interior and vegetation. “We wanted to bring the greenery right up to the rooms, so it’s not just seen from afar,” says WOHA Senior Associate Donovan Soon. An ‘urban resort’ feel was the goal, and here the garden strategy builds upon the presence of Hong Lim Park, which stretches the full length of the site on the opposite side of Pickering Street.

The length of the site encouraged WOHA to break up the mass of the hotel into three blocks, with a fourth block (containing offices) to be occupied by the Attorney General’s chambers. The E-shaped configuration of the hotel allows maximum light and green views into the 367 rooms, as well as proximity to the vegetation. The



→
**NATURAL
 ABSTRACTION:**
 Screened work booths
 on level two are reflected
 overhead, with colourful
 upholstery like
 garden blooms





PLAYFULLY PERCHED:
On the fifth storey, birdcage-style cubanas and an infinity-edge pool add drama to the city scene



SURREAL STREET VIEW:
Above the podium car park, the pool cascades into a waterfall



crisp rectilinear blocks, sheathed in high-performance glass, were designed to read as part of the city, while the scalloping gardens created a distinctly ‘other’ condition related to Hong Lim Park. A colonnade of stoic columns grounds the fantastical contoured elements with a classically derived rhythmic order that can be read and experienced in urban terms. “There’s something quite civic about the columns,” suggests Soon.

“We wanted something organic [for the contours],” he continues, “but how do you actually get it built?” The buildability of the contoured components was enhanced by their refinement into just a handful of curves that have been repeated in various configurations to create the impression of randomness. “It’s a bit like Lego,” says Soon. The contours are composed of precast concrete where serving as planters, and lighter glass-reinforced concrete in other instances.

LIGHT TOUCH:
A junior suite demonstrates
the light and airy atmosphere
in the guest rooms

CLOSE TO NATURE:
Sky terrace views and
natural light pour into a
deluxe guest room



Internal replication of the contours in bent plywood helps to forge a sense of connection between the exterior and interior spaces (as do other elements such as an internalised pond, stone cladding, and green walls). “We wanted to blur the line between outside and inside,” explains Soon. Metaphorical treatment and the abstraction of nature was implemented with elements such as moss-like carpet and reflective mirrored laminate ceilings (that create an impression of rippled water).

Views of greenery are ever apparent, and the feeling of inhabiting ‘the space under trees’, as Hassell discussed at WAF, takes prominence on level two where meeting and function rooms are situated. There, steel and timber lattice (first seen in lobby screens) creates a pavilion or tree-canopy effect, and mirrors reflect the trees of Hong Lim Park. There is a feeling of ‘lightness’ in the spatial enclosure, which is also apparent in the hotel rooms. The direct physical enjoyment of the garden



DARK SANCTUM:
Grey travertine lines the walls
of a junior suite bathroom,
black granite on the floor



spaces culminates on level five (the 'wellness' level), where guests can enjoy a 300m garden walk. Colourful cabanas shaped like songbird cages reinforce the surrealism established by the upturned contour components, one of them balanced dangerously over the edge of an infinity pool.

The sky terraces also play a role in shading and cooling the spaces below them. Indeed, a sustainable design approach is another significant story in the design of Parkroyal on Pickering, which has achieved Green Mark Platinum status. It is also an integral part of WOHA's oeuvre. "We wanted to take a very passive approach at Parkroyal," says Soon. Just over half of the guest room corridors are external, lined with garden beds and reducing the use of lighting and air conditioning – a strategy also seen in WOHA's Crowne Plaza Hotel at Changi Airport.

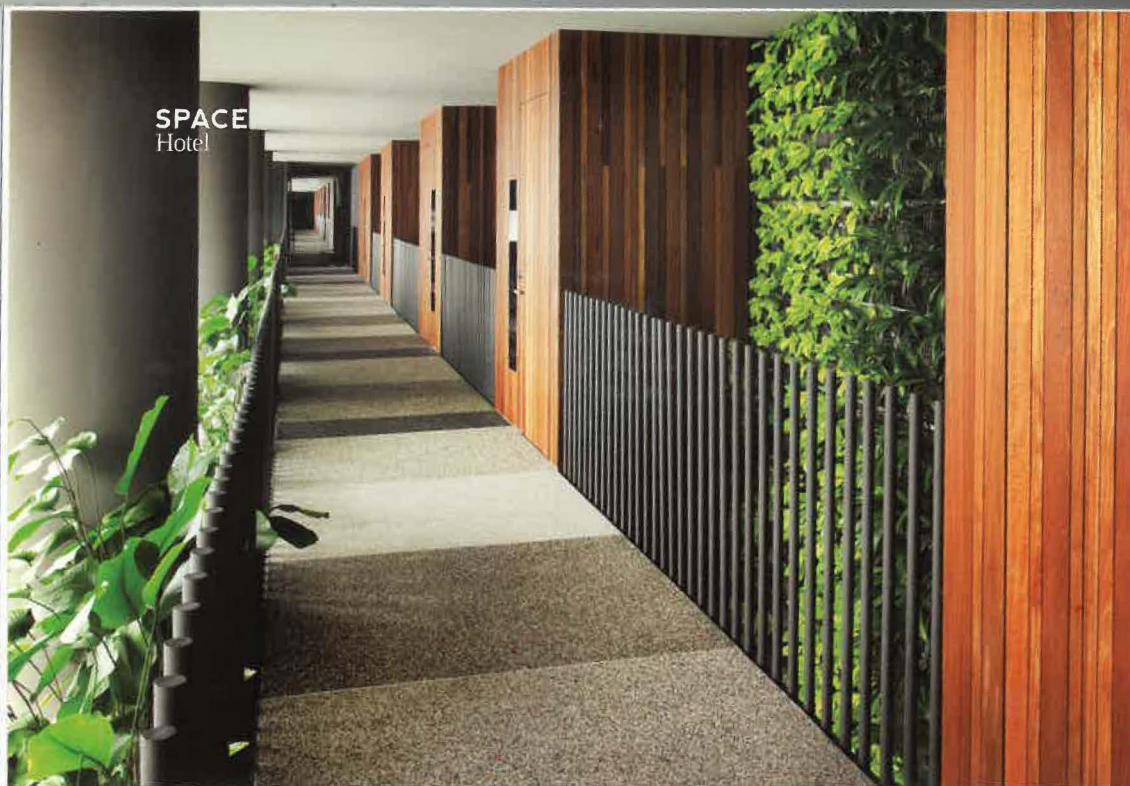
Other sustainable approaches and elements include a building configuration that maximises the infiltration of natural

"WE WANTED TO BRING THE GREENERY
RIGHT UP TO THE ROOMS, SO
IT'S NOT JUST SEEN FROM AFAR,"

light; low-e glass that cuts solar heat gain; an above-ground car park that eliminated the need for excavation and reduces reliance on mechanical ventilation and artificial lighting; rainwater harvesting and usage of NEWater for garden irrigation; and rooftop solar cells that generate enough energy to power grow lights and general garden lighting.

The garden areas themselves – the four-storey-tall sky gardens, planter terraces, green walls, reflecting pools, and waterfalls – constitute an area of 15,000sqm. This is more than 200 per cent of the total site area, and is equivalent to the area

SPACE Hotel



GREEN WALK:
A number of naturally ventilated guest room corridors reduce energy use and strengthen the garden experience

of Hong Lim Park. It will be interesting to watch, over time, the growth of the plants at Parkroyal and the extent to which they conceal the architecture.

At the same time, we will keenly observe the construction of WOHA's upcoming Oasia Downtown mixed-use tower in Tanjong Pagar, on which landscaping will be used extensively as a surface treatment. A Green Plot Ratio of 750 per cent is targeted for this heavily perforated edifice, which will continue WOHA's process of challenging of the accepted imagery and composition of Singapore's architecture, as well as its connection to landscape. ♦

↓ PARKROYAL ON PICKERING

Client Hotel Plaza Property (Singapore) Pte Ltd

Hotel Operator Pan Pacific Hotels Group

Architecture and Interior Design Firm WOHA

Project Team Wong Mun Summ, Richard Hassell, Donovan Soon, Sim Choon Heok, Francis Goh, Toh Hua Jack, Bernard Lee, Amber Dar Wagh, Mappaudang Ridwan Saleh, Evelyn Ng, Josephine Isip, Goh Kai Shien, Luu Dieu Khanh, Tan Szue Hann, Alen Low, Pham Sing Yeong, John Paul R Gonzales, Vanessa Ong, Novita Johana, Andre Kumar Alexander

Main Contractor Tiong Seng Contractors (Pte) Ltd

C&S Engineers TEP Consultants Pte Ltd

M&E Engineers BECA Carter Hollings & Ferner (S. E. Asia) Pte Ltd

Quantity Surveyor Rider Levett Bucknall LLP

Lighting Consultant Lighting Planners Associates (S) Pte Ltd

Landscape Consultant Tierra Design (S) Pte Ltd

Facade Consultant Meinhardt Facade Technology (S) Pte Ltd

Green Mark Consultant LJ Energy Pte Ltd

Acoustic Consultant CCW Associates Pte Ltd

Interior Fit-out Works (Guest Rooms) Artmaker Pte Ltd

Interior Fit-out Works (Public Areas) DH Deco Pte Ltd

Facade and Glazing Positive Engineering Pte Ltd

ACMV, Electrical, Plumbing, Sanitary, Fire Protection Consultant Powen Electrical Engineering Pte Ltd

Softscape Consultant Kok Keong Landscape Pte Ltd

Building Maintenance System Consultant Inter Equip Supplies Pte Ltd

Signage Consultants Fuji Signcrafts Industries Pte Ltd

Piling Sub-Contractor Resource Piling Pte Ltd

Time to Complete Around 5 years (from design inception)

Gross Floor Area 29,811.54sqm

Plot Area 6,958.9sqm

Project Cost S\$137 million

WOHA Architects Pte Ltd

(65) 6423 4555 woha.net

Furniture In First and Second Storeys (Lobby, Restaurant, Meeting/Function Spaces), 'Le Bambole' Armchair and Sofa, 'Husk' Armchair, 'Doyl' Chair, 'Crinoline' Chair, 'Crinoline' Armchair, 'Frank' Table, 'Tribambola' Sofa, 'Feio' Sofa, 'Mart' Chair from B&B Italia, Semi-Bar Stool, Side Table, Bar Stool and Dining Table are Customised, Customised Contour Bar in Plywood Finish and Countertop in Corian. In Fifth Storey (Pool Terrace), 'Karlós' Armchair and Ottomans, 'Frank' Side Table from B&B Italia, 'Ming' Chairs from Red House Carved Furniture Co., Reception Table, Sofas and Cushions are Customised. In Sixteenth Storey Club Lounge, Customised Table in Decorative Cement Tile. In Standard Guest Rooms, Sofa, Coffee Table and Desk are Customised, 'Sayl' Desk Chair from Herman Miller, Soft Furnishings from Atelier. In Suites, Sofa, Coffee Table, Desk and Dining Room are Customised, 'Sayl' Desk Chair from Herman Miller, Dining and Dressing Areas 'Doyl' Chair from B&B Italia, 'Piccola Papiio' Chair, 'Grande Papiio' Chair and 'Grande Papiio' Ottoman from B&B Italia, Soft Furnishings from TD Fabrics, Himatsingka Singapore, Singapore Wallcoverings Centre and Roselle Mont Chair Furnishings.

Lighting In First and Second Storeys, 'Yumi' Floor Lamp from Fortana Arte, Lights at Lobby Seating are Customised. In Standard Guest Rooms and Suites, Light Fittings are Customised. Generally Throughout, Lighting from Million Lighting.

Finishes In First and Second Storeys, Contour Wall Panels are Customised, Wave-Green Marble Feature Wall from Kstone, Metallic Mosaic Tiles on Walls from Unlimited Enterprises, Mondrain-Pattern Mirror and Mosaic Tiles Wall is Customised,

Woven Vinyl Wall Panels from Chilewich Contract. In Bathrooms Metal Titanium Tiles from Apavisa Porcelanico, 'Soho Teak' Laminated Wall Cladding from Lamitak, Ceiling Membrane Light Diffuser from Barrisol, Olive Granite, Shanxi Flooring from Cheng Fong Enterprises. In Fifth Storey, Iron Wood Cladding from Cheng Fong Enterprises, Fabric Wall Covering from Goodrich Global, Shanxi Black Granite on Spa Floor from Kstone, Balau Timber on Gym and Changing Room Floors from DH Deco, Porcelain Tiles on Bathroom Floors from Apavisa Porcelanico. In Standard Guest Rooms, Custom-colour Glass Mosaic Tiles on Bathroom Floors from Kokocolor, Brushed Black Granite on Bathroom Floors from Kstone, Lexmark Carpet from Contract-Image Trading, Wood Grain Laminates on Walls and Joinery from Lamitak, Bedhead Fabric Panel from Atelier. In Suites, Grey Travertine on Junior Suites Bathroom Walls from Kstone, Brushed Black Granite on Bathroom Floors from Kstone, Tandus 'Elemental' Carpet from Weavepact and Associates, Wood Grain Laminates on Walls and Joinery from Lamitak, 'Atmosphere-Mexico' Bedhead Fabric Panel in Executive and Junior Suites from Himatsingka Singapore, Xorel-Strie Fabric Wall Panelling from Roselle Mont-Chair Furnishing.

Fixed and Fitted In First and Second Storeys, Sanitary Ware from Duravit, Sanitary Fittings from Hansgrohe, Customised Basins from Apaiser, Timber Toilet Paper Holders are Customised. In Standard Rooms, Customised Basins from Apaiser, 'Metris S' Sanitary Fittings from Hansgrohe, Sanitary Accessories are Customised. In Suites, Customised Basins and Bathtubs from Apaiser, Axor 'Urquiola' Sanitary Fittings from Hansgrohe, Sanitary Accessories are Customised. Generally Throughout, Lifts and Escalators by Mitsubishi Elevator (Singapore).

Art At Pool Terrace, Ceramic Artworks from Piece of Mine

A+D Surfaces (65) 6836 6386 Apaiser Pte Ltd (61) 3 9421 5722 apaiser.com.au Apavisa Porcelanico apavisa.com/en/ Barrisol barrisol.com B&B Italia bebitalia.it Cheng Fong Enterprises Pte Ltd (65) 6367 2128 Chilewich Contract chilewich.com/contract Contract-Image Trading Pte Ltd (65) 6332 3055 DH Deco (65) 6472 6600 dhdeco.com Fontana Arte fontanaarte.com Goodrich Global Pte Ltd (65) 6787 8787 goodrichglobal.com Hansgrohe Pte Ltd (65) 6884 5060 hansgrohe.com.sg Herman Miller hermanmiller.com Himatsingka Singapore Pte Ltd himatsingka.com Kokocolor (852) 2423 3188 kokocolor.com Kstone Pte Ltd (65) 6543 0993 Lamitak (65) 6366 1212 lamitak.com Mitsubishi Elevator (Singapore) Pte Ltd mitsubishielectric.asia Piece of Mine (65) 6440 4886 pieceofmine.asia Red House Carved Furniture Co (65) 6474 6980 redhouseantiques.com.sg Roselle Mont Clair Furnishing Pte Ltd (65) 6472 4431 rosellemontclair.com Singapore Wallcoverings Centre Pte Ltd (65) 64792822 singwall.com.sg TD Fabrics Pte Ltd (65) 6295 5115 tdfabrics.com.sg Unlimited Enterprises (65) 6298 5713 unilimite.com.sg Weavepact and Associates Pte Ltd (65) 6744 7997